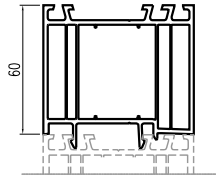
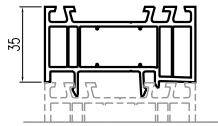


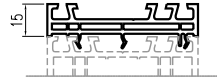
Outerframe Extension Profiles



140207 - (EXF60WF)
EXTENSION FRAME 60mm

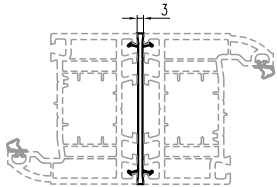


140205 - (EXF35WF)
EXTENSION FRAME 35mm

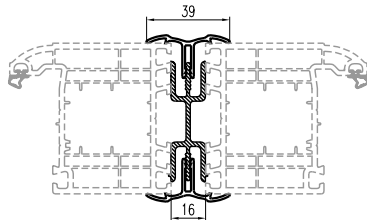


140209 - (EXF15WF)
EXTENSION FRAME 15mm

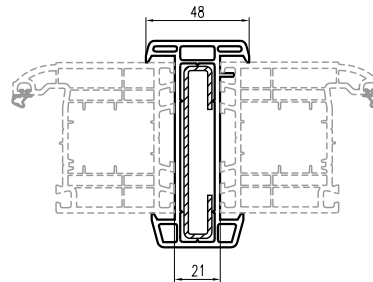
Coupling Profiles



140203 - (CP3x70)
COUPLING FULL WIDTH

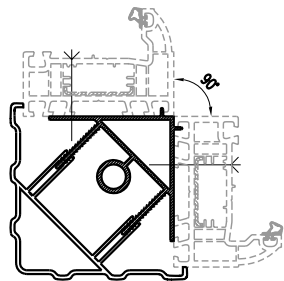


V MULTI COUPLER
VARIABLE ANGLE INTERNAL COVER

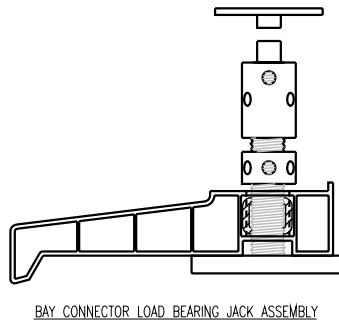


140218 - (CP48x70) COUPLING SLEEVE PROFILE
229018 - (STC13x80x2) REINFORCEMENT

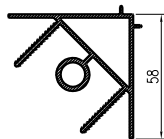
90° Fixed Angle Bay Windows



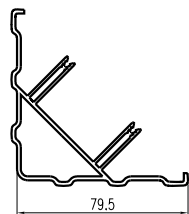
90° FIXED ANGLE BAY ASSEMBLY



BAY CONNECTOR LOAD BEARING JACK ASSEMBLY

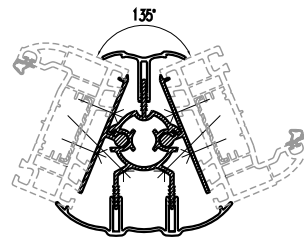


DBFRC90AP
90° ANGLE ALUM. LOAD BEARING FRAME CONNECTOR

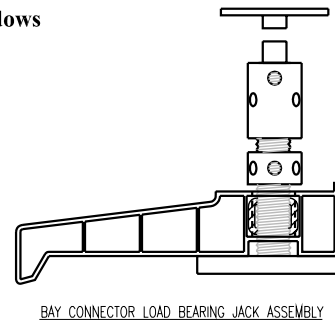


DBEXC90AP
90° ANGLE EXTERNAL COVER

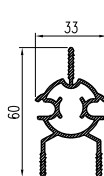
Variable Angle Bay / Bow Windows



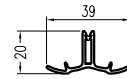
VARIABLE ANGLE BAY ASSEMBLY 120° - 170°
(135° SHOWN)



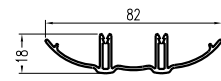
BAY CONNECTOR LOAD BEARING JACK ASSEMBLY



DBPOST



DBINCAP
VARIABLE ANGLE INTERNAL COVER



DBEXCAP
VARIABLE ANGLE EXTERNAL COVER



DBFRCWF
VARIABLE ANGLE ALUM. FRAME CONNECTOR

Some profiles and associated products may be subject to change, aluplast reserve the right to alter without notice any specification or design.

aluplast UK Ltd Leicester Road, Lutterworth, Leicestershire. LE17 4HE - Tel.: +44 (0) 1455 556771 - Fax: +44 (0) 1455 555323

Issue 9 Date: 2005-05/12